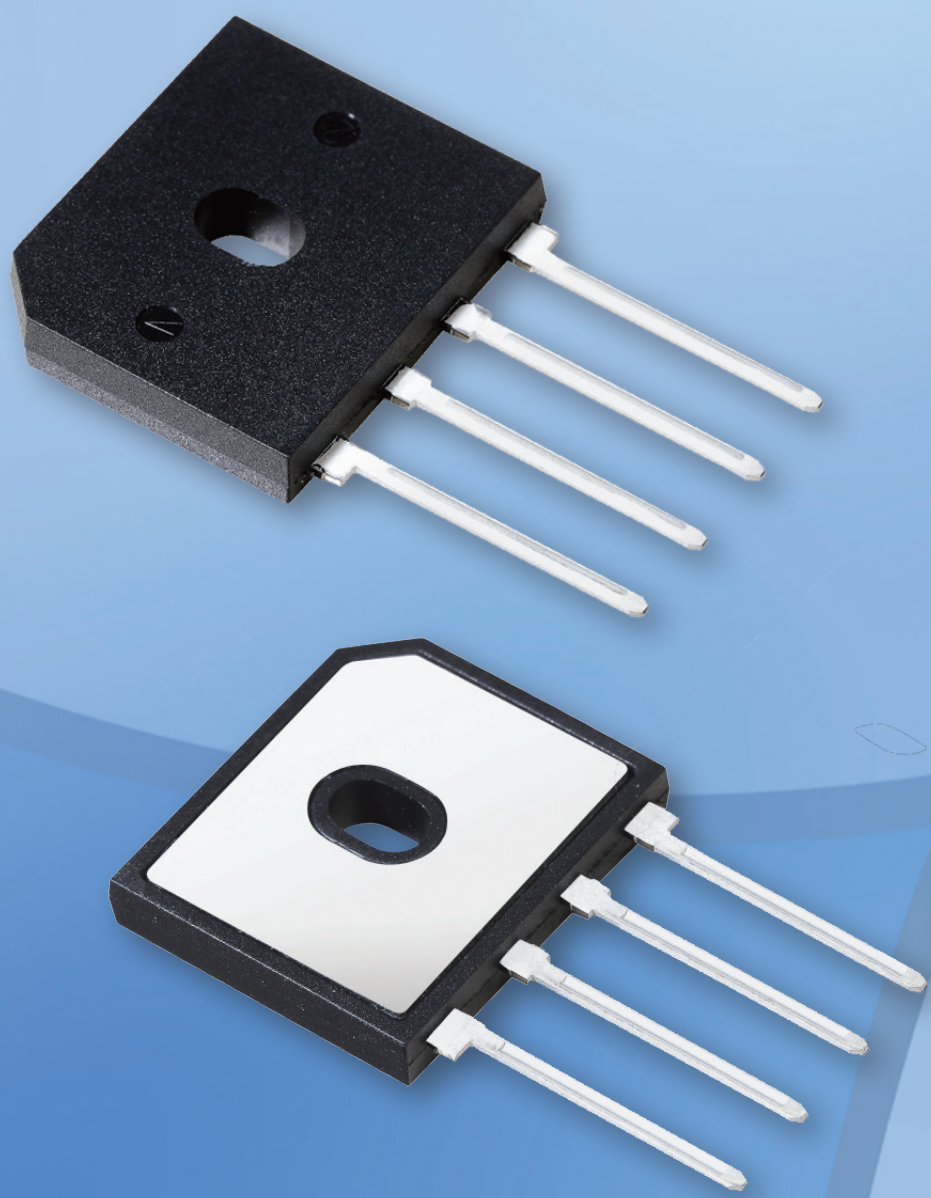




Enhanced PowerBridge™ Rectifiers

New, Smaller, Up to 25 A Enhanced High-Power-Density Bridge Package



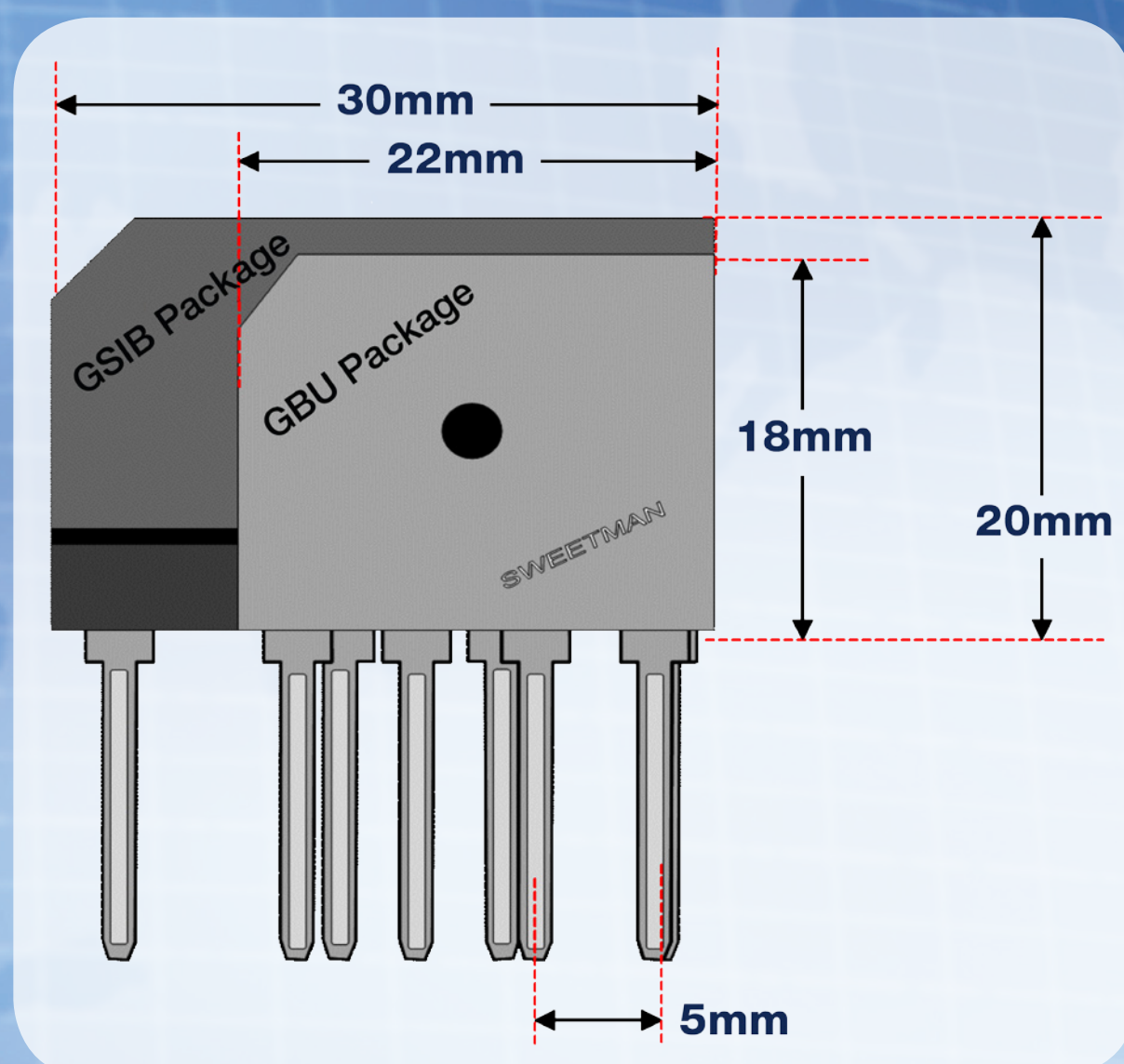
Series	IO	IFSM
BU25	25	300 A
BU20	20	240 A
BU15	15	200 A
BU12	12	150 A
BU10	10	120 A

- Features
 - New smaller, space-saving enhanced high-power bridge package
 - Special wide aluminum side plate design for better heat dissipation performance than any other bridge package of similar or larger size on the market
 - Operating voltage range: 600 V to 1,000 V
 - High power density: 10 A to 25 A
 - High forward surge capability up to 300 A at 8.3 ms
 - Low thermal resistance: 2 °C per Watt on 60-W air-cooled heat sink
 - Solder pad compatible to industrial standard packages
 - Meets lead (Pb)-free, RoHS, and WEEE requirements

- Applications

Switchmode power supplies in computer, telecommunications, industrial, and consumer electronics:

- High power output SMPS for desktop PC and servers
- High power output adaptors for notebook PCs
- Telecommunication power supplies
- Industrial switchmode power supplies
- High output linear power supplies
- Home appliances (refrigerator, air conditioner, induction heater)
- Audio power amplifiers



One of the World's Largest

Manufacturers

of Discrete Semiconductors and Passive Components

www.vishay.com